



Kildare PPN eBulletin

Funding Opportunities



FundingPoint December - January

Kildare LCDC have engaged The Wheel to provide a bimonthly publication for Kildare which will include EU, national, philanthropic and local funding information for community and voluntary groups in Kildare.

[Download FundingPoint](#)

LAWPRO Catchment Support Fund

This fund empowers community groups to grow their capacity to protect their local rivers, lakes, coastal areas and the surrounding environment.

Organisations are invited to apply for financial assistance to support organisational costs such as statutory and/or legal fees, insurance costs associated with catchment management, accountancy fees, website annual support costs, promotional materials and group development activities.

The closing date for applications is Tuesday 14th January 2025 at 5pm.

[Find out more](#)

Foras na Gaeilge - Festivals Scheme / Scéim na bhFéilte 2025 Glaoch 1

The Festivals Scheme will be open to appropriate local groups to give them an opportunity to develop arts festivals or elements of festivals being run and implemented through the medium of Irish or which Irish language arts are a central part of them between 01 January-30th June 2025

This scheme is aimed at festivals which aim to foster and promote through Irish or bilingually the Irish language, language-based arts and Irish language heritage, as an integral part of the festival, and to provide a platform for the Irish language community, to the wider community and to the arts sector.

Beidh Scéim na bhFéilte Glaoch 1 oscailte do ghrúpaí áitiúla cui c hun deis a thabhairt dóibh forbairt a dhéanamh ar fhéilte ealaíon nó ar eilimintí d'fhéilte atá á reáchtáil agus á gcur i bhfeidhm trí m heán na Gaeilge nó a bhfuil na healaíona Gaeilge mar chuid lárn ach diobh idir 01 Eanáir - 30ú Meitheamh 2025.

Diríonn an scéim seo ar fhéilte a bhfuil d'aoidhm acu an Ghaeilge, na healaíona Gaeilge, na healaíona dúchasacha agus oidhreacht na Gaeilge a chosú agus a chur chun cinn trí mheán na Gaeilge e nó go dátheangach, mar dhíúthchuid den fhéilte, agus ardan a chur ar fáil do phobal na Gaeilge, don mhórhobal agus d'earráid i na n-ealaíon.

[Find out more](#)

The Heritage Council's Heritage Organisation Support fund

The Heritage Organisations Support Fund aims to build the capacity of non-governmental organisations working in the heritage sector in Ireland by providing funding towards their core costs. This funding would provide support to:

- develop and strengthen the skills, processes, and resources that heritage organisations need to survive, adapt, and thrive in the uncertainty of recent times.

- heritage organisations who play a key role in the heritage infrastructure of Ireland and to help achieve national policy and plans.

[Find out more](#)



Generation Green Community Fund

[Full details](#)



Community Monuments Fund

[Full details](#)



Breaking Barriers Fund

[Full details](#)



LAWPRO Small Grants and Events Scheme 2024

[Full details](#)



Texaco Support for Sport

[Full details](#)



Community Recognition Fund

[Full details](#)

Recent News

2024 Healthy Ireland Survey Results Announced



The Healthy Ireland Survey 2024, recently published by the Department of Health and conducted by Ipsos B&A, has found that GP visits increased over the last twelve months compared to 2023.

Almost 7,400 people over the age of 15 were surveyed on a range of themes including general health, smoking, vaping and alcohol consumption, mental health, suicide awareness, GP service utilisation, nutrition, physical activity and caring responsibilities.

[Find out more](#)



Recruitment: Social Inclusion Manager

County Kildare Leader Partnership CLG, is hiring a Social Inclusion Manager to spearhead the delivery of the Social Inclusion and Community Activation Programme (SICAP) and other impactful initiatives.

[Find out more](#)

Upcoming Events

St Brigid's Celebration will return as Brigid 2025, Spirit of Kildare



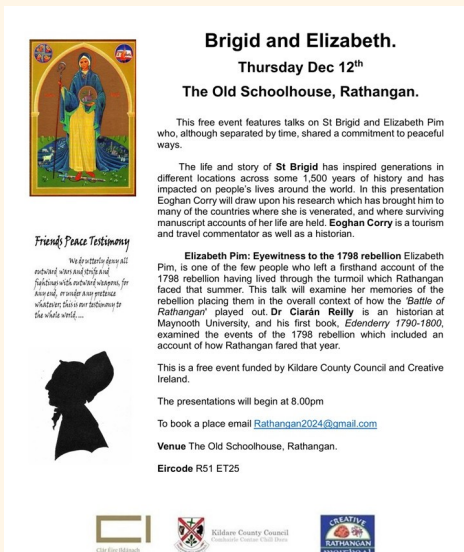
After the resounding success of the Brigid 1500 programme last year, which brought nearly 80,000 visitors to Kildare, we were delighted to hear that the festival will return for 2025.

Brigid 2025, Spirit of Kildare was launched on 13th November at the Naas Library & Cultural Centre, with special guests Mary Coughlan & Megan O'Neill.

The festival will take place from 24th January - 3rd February and will commemorate St Brigid through the theme "Her Spirit, Our Story".

Artists confirmed to take part across the festival include Mary Coughlan, Orla Gartland, Una Healy, Lemnello, Lisa O'Neill, and Megan O'Neill with many more to be announced.

[Find out more](#)



Brigid and Elizabeth

Date: Thursday December 12th - 8:00pm **Venue:** The Old Schoolhouse Rathangan

This free event features talks on St Brigid and Elizabeth Pim, who, although separated by time, shared a commitment to peaceful ways. The life and story of St Brigid has inspired generations in different locations across some 1,500 years of history and has impacted on people's lives around the world. In this presentation Eoghan Corry will draw upon his research which has brought him to many countries where she is venerated and where surviving manuscript accounts of her life are held. Eoghan Corry is a tourism and travel commentator as well as historian.

To book a place, email Rathangan2024@gmail.com

Public Consultations

Corbally Canal & Liffey Corridor Enhancement Project

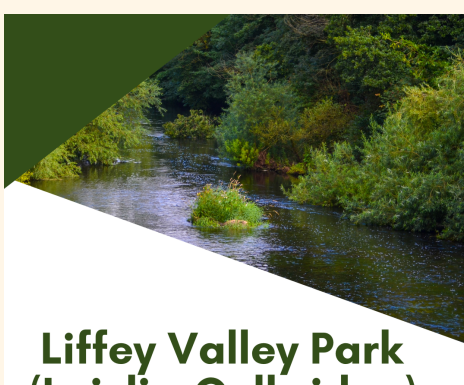
Public Survey launched to explore the future of Corbally Canal and the River Liffey Valley as a recreational project.



The "Corbally Canal" stretches between Newbridge Road and Corbally Harbour, covering approximately c.8 kilometres and the River Liffey between Newbridge Bridge and Kilkullen Bridge extends to c.10km. If developed, this would provide a recreational amenity that would benefit Naas, Newbridge, Athgarvan, Kilkullen and the wider area. The Corbally Canal and Harbour area itself, also has the potential to be developed as a Blueway, if strict criteria are met. Kildare County Council is seeking feedback from individuals who live, visit, or work in the Naas, Newbridge, Athgarvan and Kilkullen areas, to better comprehend their recreational interests and help shape the future of this amazing landscape.

[Take Survey](#)

Liffey Valley Park (Leixlip-Celbridge): Public Survey

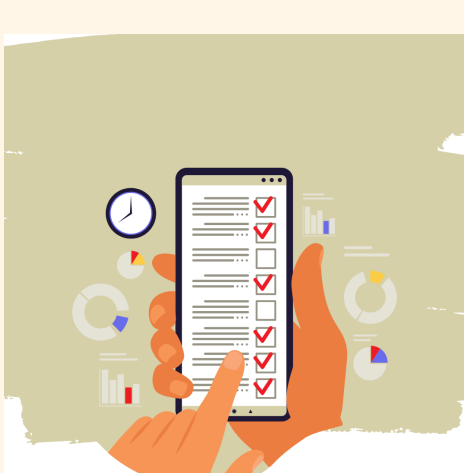


Liffey Valley Park (Leixlip-Celbridge) Public Survey

Kildare County Council has published a public survey so that you can help them develop an understanding of the River Liffey corridor between Leixlip and Celbridge, and the way that it might be developed in the future for the benefit of the local community and visitors to the area. Kildare County Council is exploring the potential for the provision of a Liffey Valley Park between Leixlip and Celbridge, extending over approximately 6.35km between St. Catherine's Park, Leixlip to Celbridge Bridge, Co. Kildare. If delivered, this would be the first phase of a potentially wider Liffey Valley Park within County Kildare that is rooted in the *Liffey Valley Park Strategy* (2006).

[Take Survey](#)

Domestic Wastewater Treatment System Survey



The **anonymous online survey** in question was developed as part of the EPA-funded project **REMARK** and is intended for Irish users of domestic wastewater treatment systems (i.e. septic tank/package treatment systems). Survey participation will help identify policy supports to simplify - and potentially incentivise - system maintenance to help rural homeowners more easily maintain their systems and avoid environmental/health issues deriving from untreated domestic wastewater.

[Take Survey](#)

